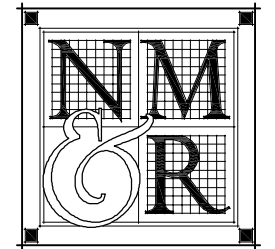


KEYNOTES

Copyright © 2008

All plans, design, arrangements and plans indicated or represented by this drawing are owned by and the property of NICHOLS, MELBURG and ROSSETTO and were created, evolved and developed for use on, and in connection with, the specified project. None of such design, arrangements or plans shall be used by, or disclosed to any person, firm or corporation for any purpose whatsoever without the written permission of NICHOLS, MELBURG and ROSSETTO.



NICHOLS
MELBURG
ROSSETTO
ARCHITECTS + ENGINEERS
300 KNOLLCREST DRIVE
REDDING, CA 96002
(530) 222-3300 (530) 222-3538 FAX
http://www.nmrdesign.com

CONSULTANTS

LICENSE STAMPS



PROJECT NAME
**RURAL HEALTH
SCIENCES INSTITUTE
FOR
COLLEGE
OF THE
SISKIYOU**

SISKIYOU JOINT COMMUNITY
COLLEGE DISTRICT
YREKA, CALIFORNIA

SHEET TITLE FLOOR PLAN

DRAWING STATUS CONSTRUCTION DOCUMENTS PHASE II BID SET

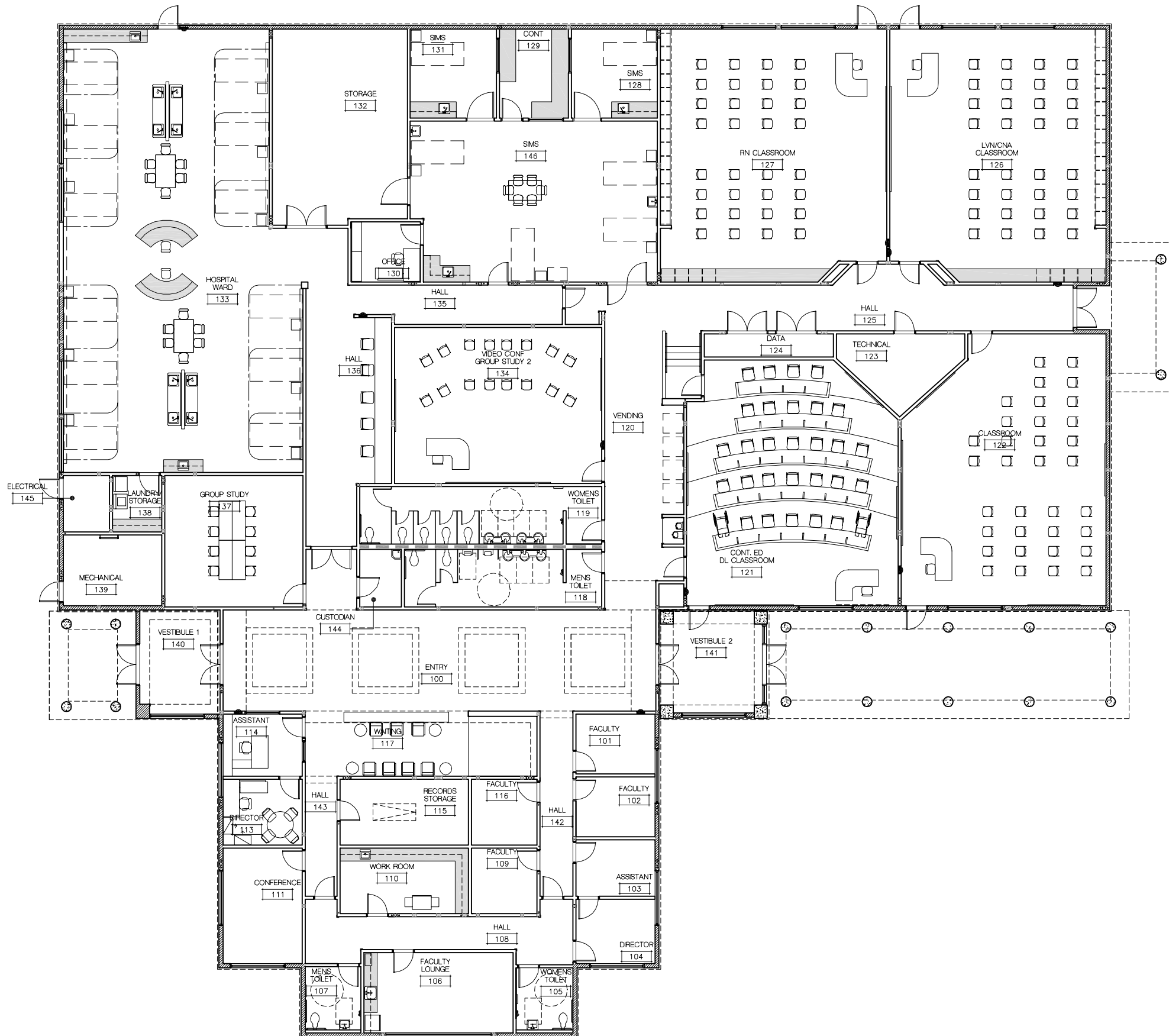
REVISIONS

Sym.	Description	By	Date

Drawn By	AK, KC
Checked By	KC, WK
Date Drawn	01.17.08
Scale	AS NOTED
Job No.	07-2368

SHEET No.

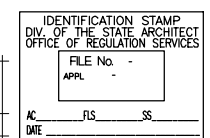
A2.1



FLOOR PLAN LEGEND

- 2 x 6 WOOD FRAMING
- 2 x 8 WOOD FRAMING
- 2 x 10 WOOD FRAMING
- ⤷ DOOR (SEE DOOR SCHEDULE)
- ◻ WINDOW (SEE WINDOW SCHEDULE)
- ▨ PLASTIC LAMINATE COUNTER TOP OVER CASEWORK. DASHED LINE INDICATES WALL MOUNTED CASEWORK ABOVE
- SINK
- ◻ TOILET
- ◻ URINAL
- FIRE EXTINGUISHER CABINET
- ◻ ACCESS FLOOR SYSTEM AT THIS ROOM

APPROVAL



FLOOR PLAN

SCALE: 1/8"=1'-0"

LogIn Name: Amy K
Plot Date: March 05, 2008 - 10:27 AM
File Name: N:\Projects\2007\2368\01_CCS Rural Health Sciences Inst\Drawings\Sheets\A2.1_PHS_Lfloor.dwg
User: Amy K
Printer: HP DesignJet 5000 LPS