

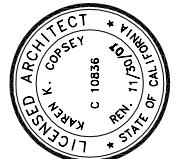
NICHOLS  
MELBURG

ROSSETTO  
ARCHITECTS + ENGINEERS

300 KNOLLCREST DRIVE  
REDDING, CA. 96002  
(530) 222-3300 (530) 222-3538 FAX  
<http://www.nmrdesign.com>

CONSULTANTS

LICENSE STAMPS



PROJECT NAME

COLLEGE OF THE  
SISKIYOU

TACTICAL  
TRAINING  
SUPPORT CTR

WEED, CALIFORNIA

SHEET TITLE

SECTIONS

DRAWING STATUS  
CONSTRUCTION  
DOCUMENTS  
DSA SUBMITTAL

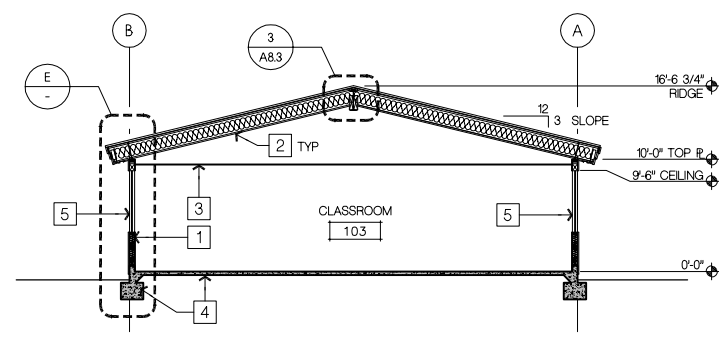
REVISIONS

Sym.	Description	By	Date

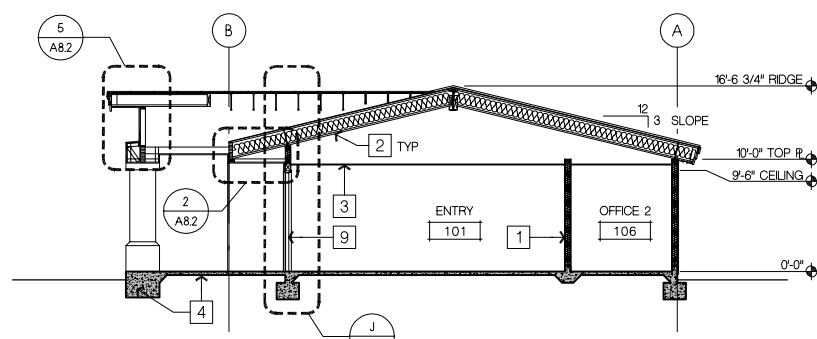
Drawn By	WK, AK
Checked By	WK
Date Drawn	03/07
Scale	AS NOTED
Job No.	06-2327

SHEET No.

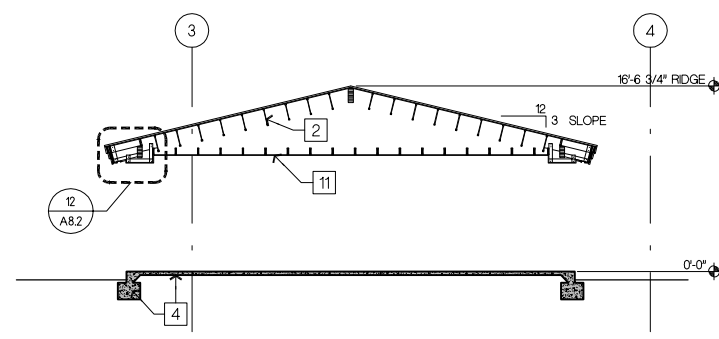
A3.2



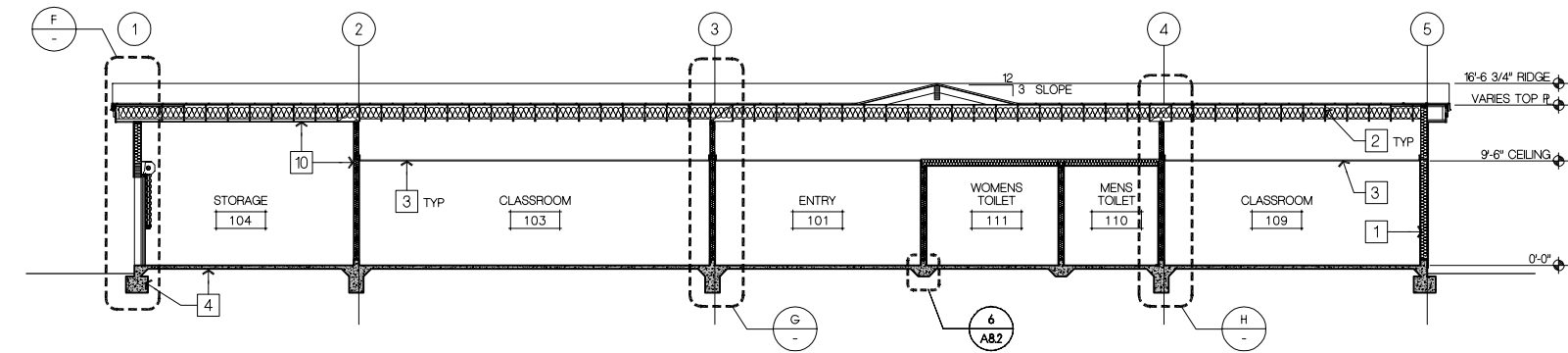
**SECTION A**  
SCALE 1/8"=1'-0"



**SECTION B**  
SCALE 1/8"=1'-0"



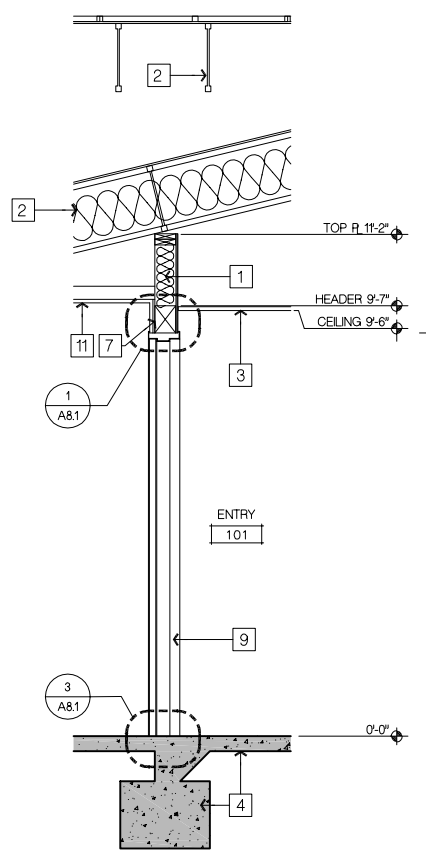
**SECTION C**  
SCALE 1/8"=1'-0"



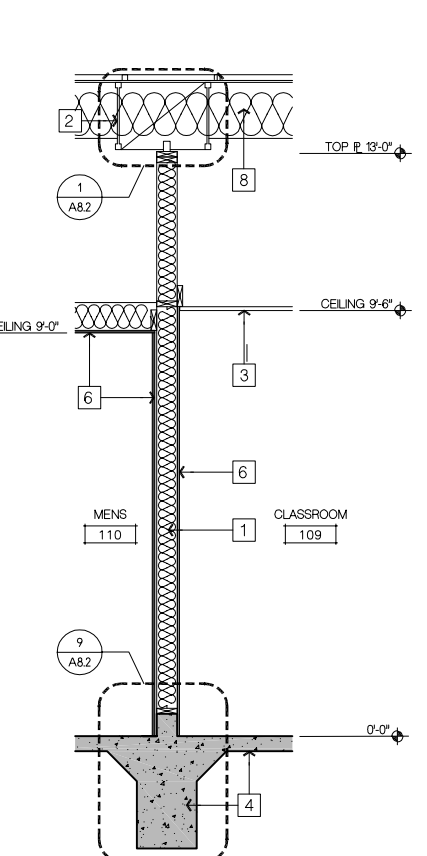
**SECTION D**  
SCALE 1/8"=1'-0"

**KEYNOTES**

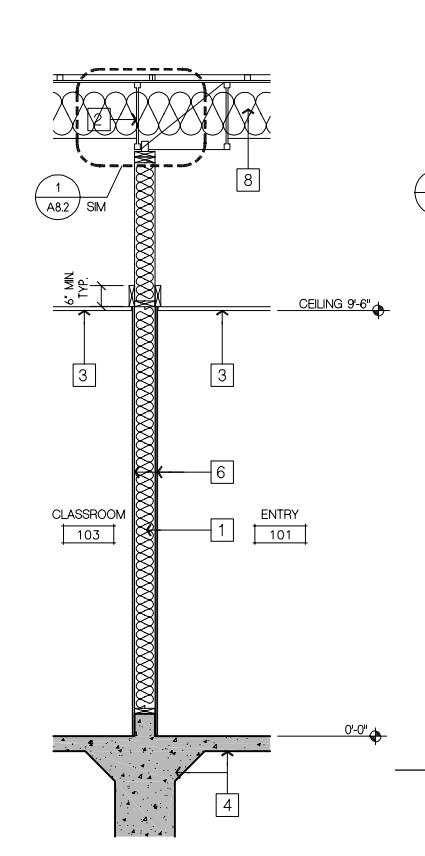
- 1 2 x WOOD FRAMING
- 2 TJI FRAMING
- 3 SUSPENDED CEILING
- 4 CONC SLAB & FOOTING
- 5 ALUMINUM WINDOW - SEE SCHEDULE
- 6 5/8" TYPE 'X' GYPSUM BOARD
- 7 CEMENT PLASTER SYSTEM O/ PLYWOOD SHEATHING
- 8 BATT INSULATION
- 9 HOLLOW METAL DOOR & FRAME
- 10 HARDI PANEL
- 11 CEMENT PLASTER SOFFIT O/METAL LATH
- 12 ROLL UP DOOR SEE 8/A8.1



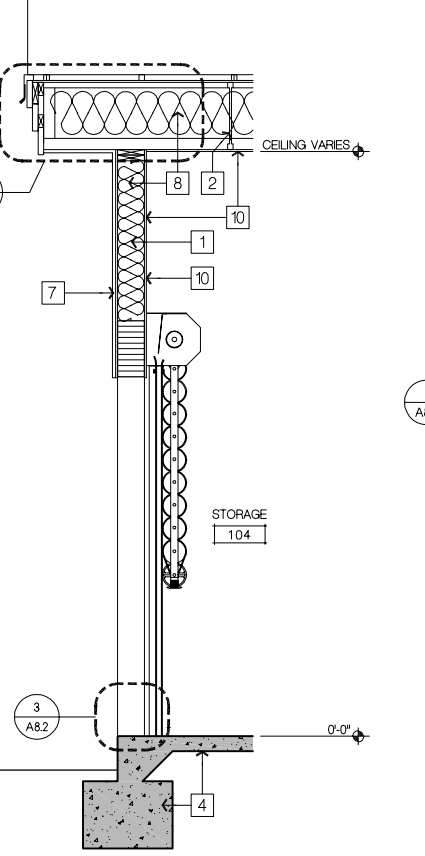
**SECTION J**  
SCALE 1/2"=1'-0"



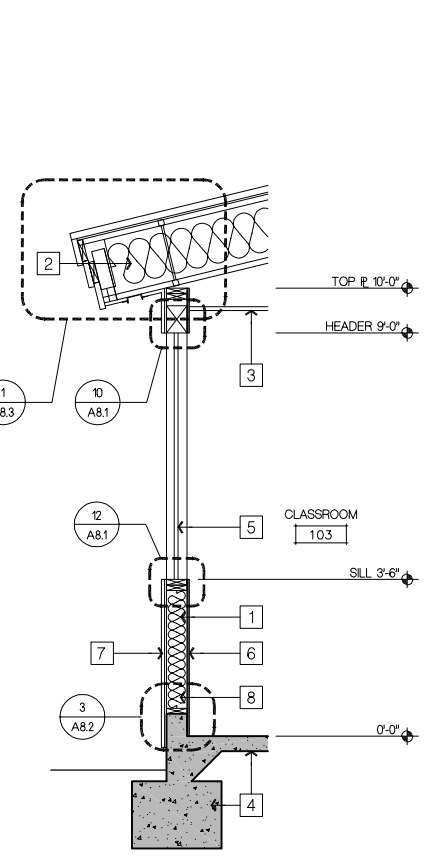
**SECTION H**  
SCALE 1/2"=1'-0"



**SECTION G**  
SCALE 1/2"=1'-0"



**SECTION F**  
SCALE 1/2"=1'-0"



**SECTION E**  
SCALE 1/2"=1'-0"

**APPROVALS**