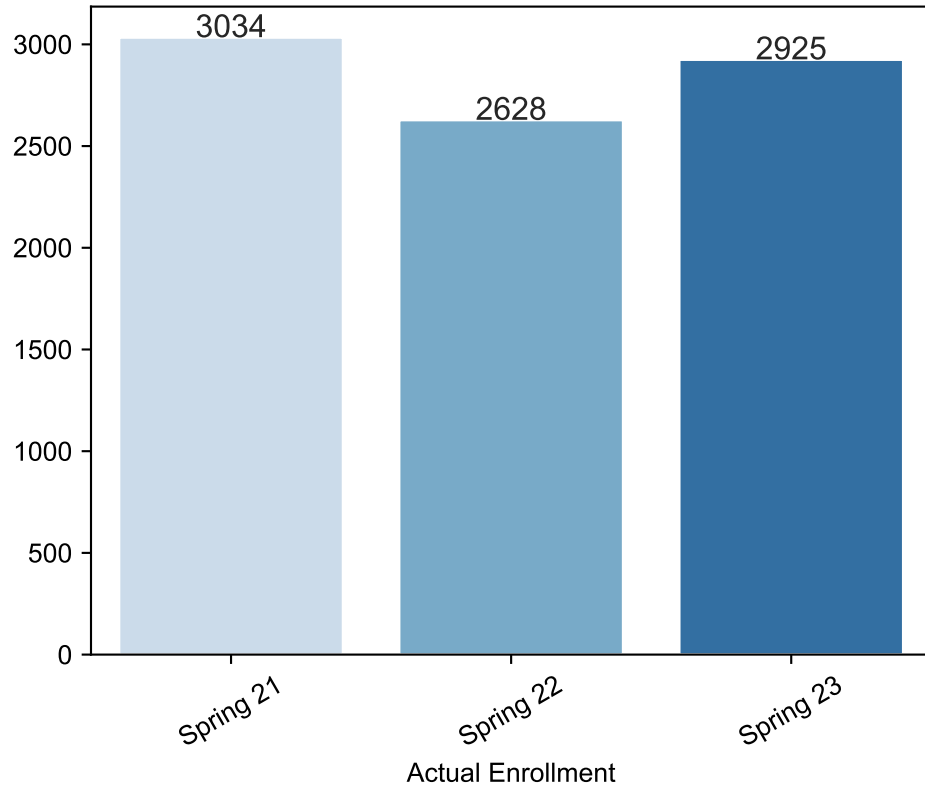
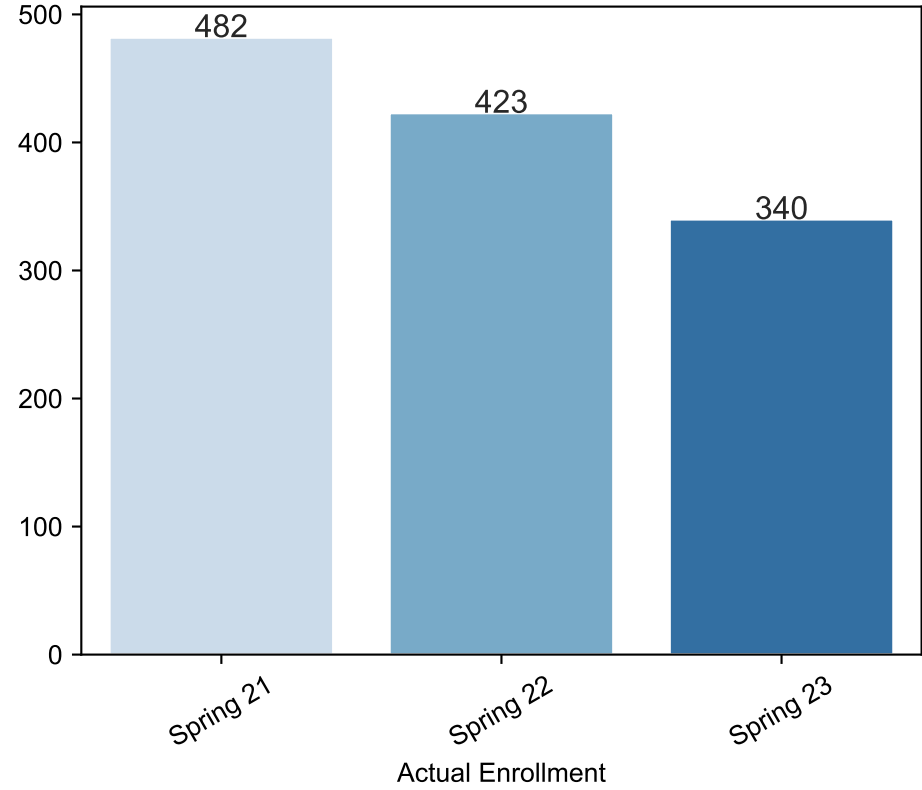


Spring Enrollment Report as of 04/17/2023

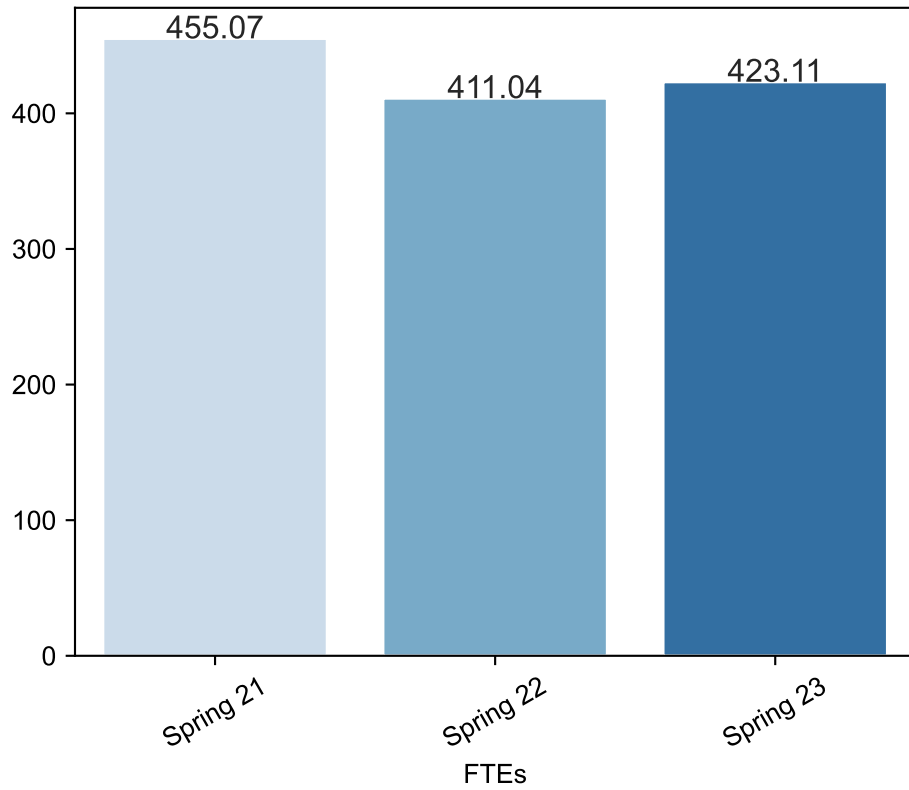
Spring Term: 3 Year Credit Enrollments



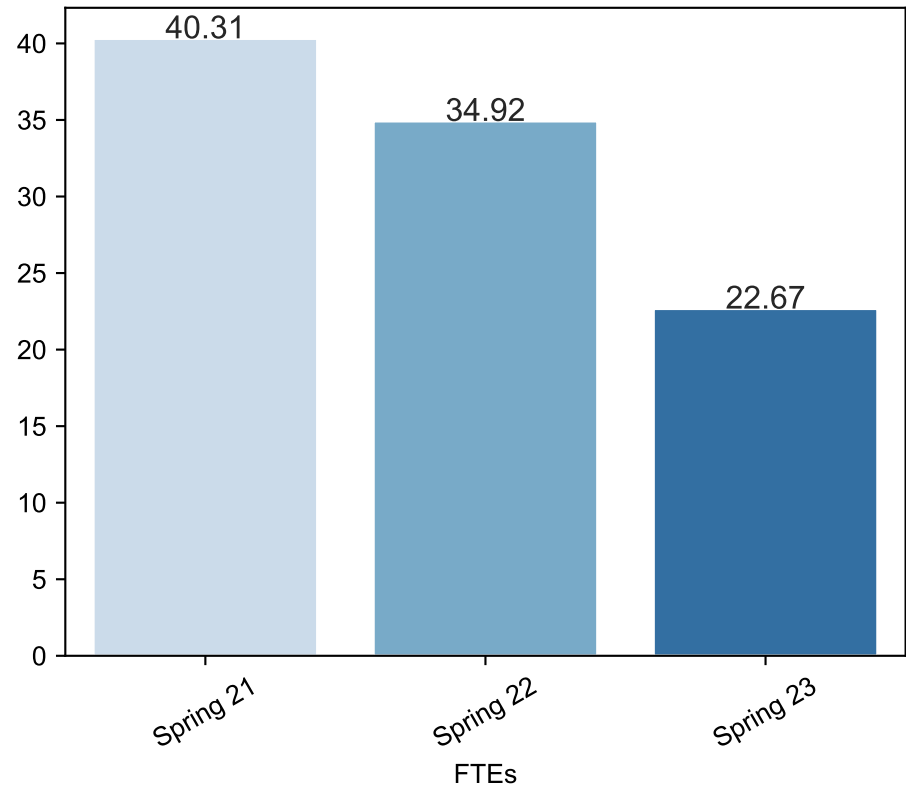
Spring Term: 3 Year Non Credit Enrollments

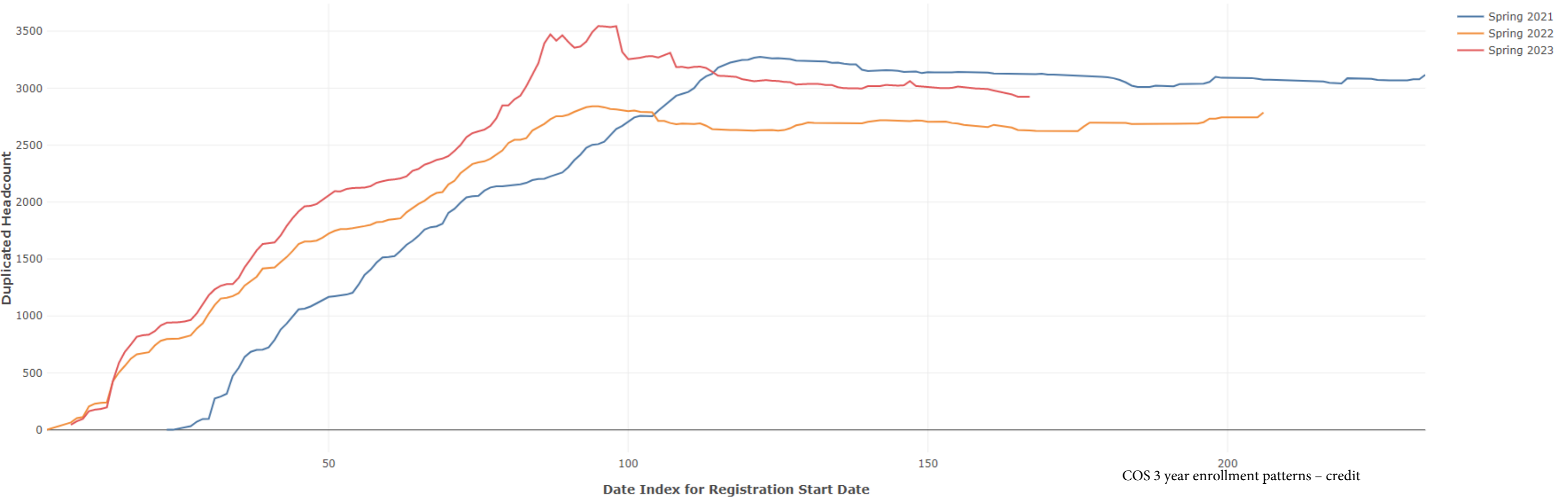


Spring Term: 3 Year Credit FTEs



Spring Term: 3 Year Non Credit FTEs





COS 3 year enrollment patterns – credit

Report Filters

Academic Level is Non Credit

Academic Years Ago is in list (0, 1, 2)

Date Index for Registration Start Date : All

Enrolled is Yes

Semester is Spring

Measures

Duplicated Headcount

