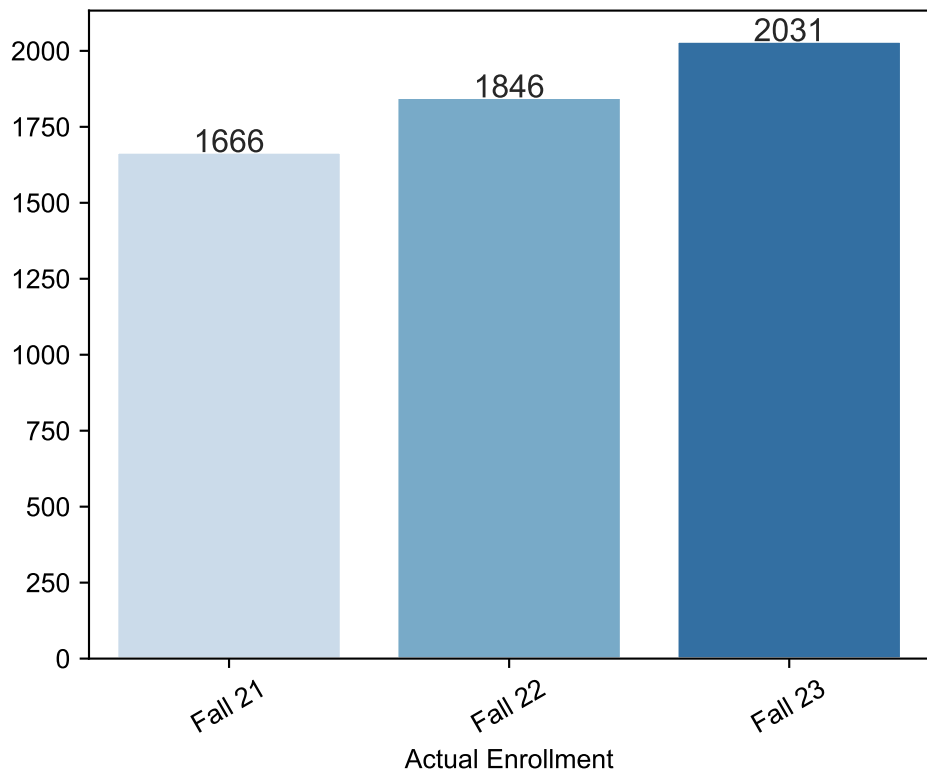
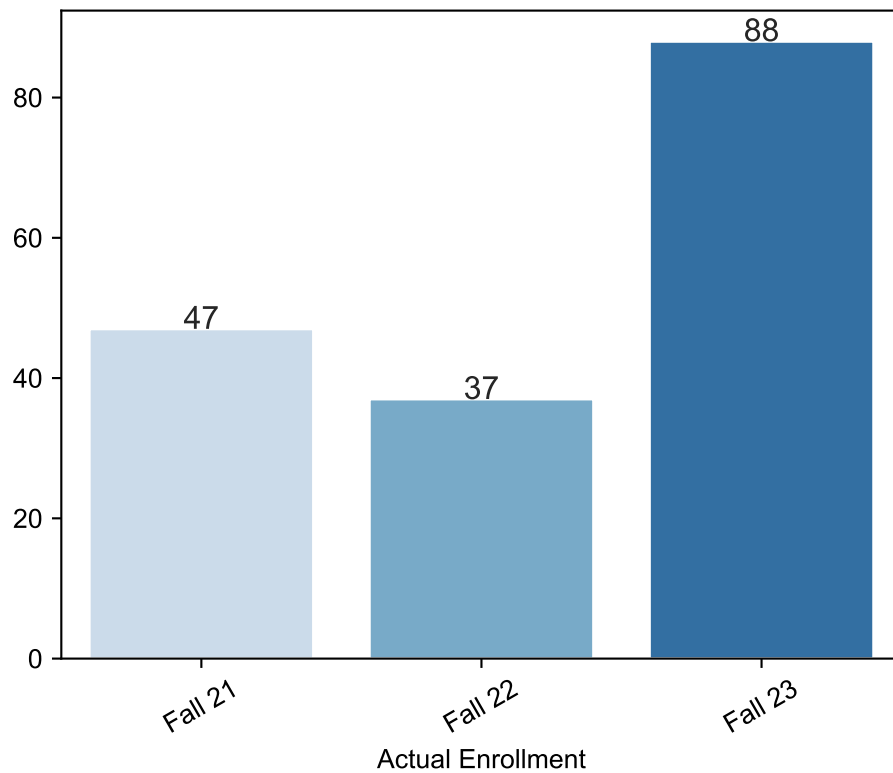


Fall Enrollment Report as of 07/10/2023

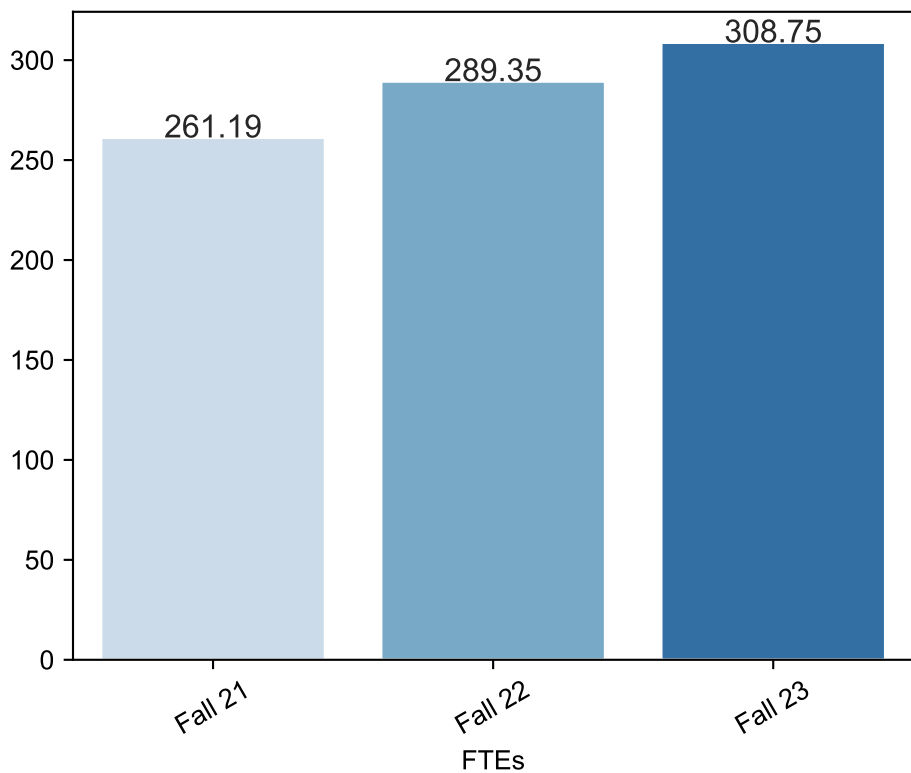
Fall Term: 3 Year Credit Enrollments



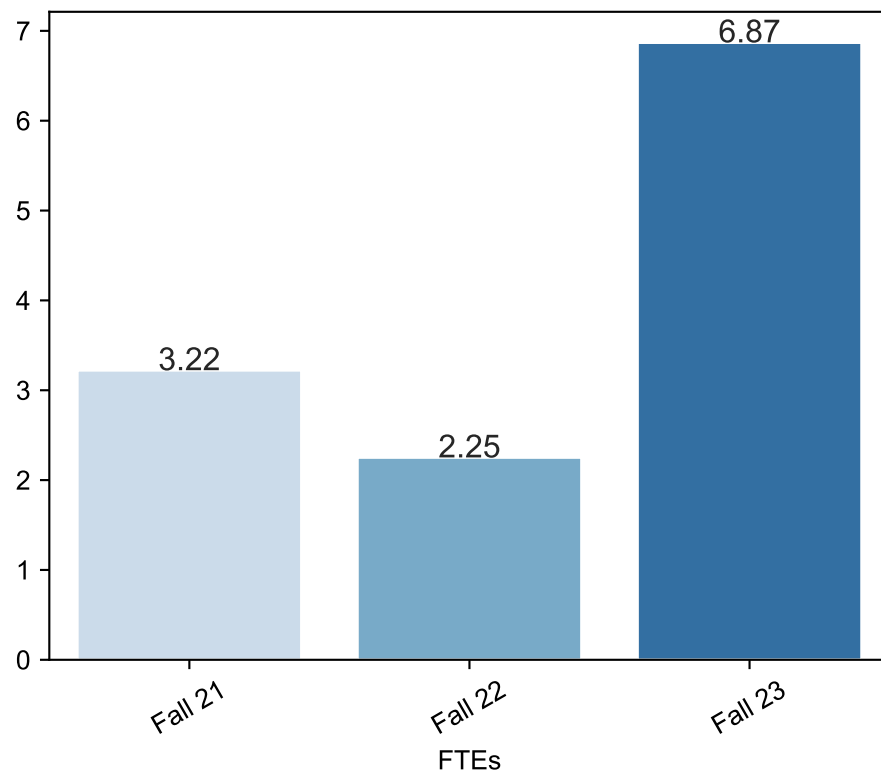
Fall Term: 3 Year Non Credit Enrollments



Fall Term: 3 Year Credit FTEs



Fall Term: 3 Year Non Credit FTEs



Report Filters

Academic Level is Credit

Academic Years Ago is in list (-1, 0, 1)

Date Index for Registration Start Date : All

Enrolled is Yes

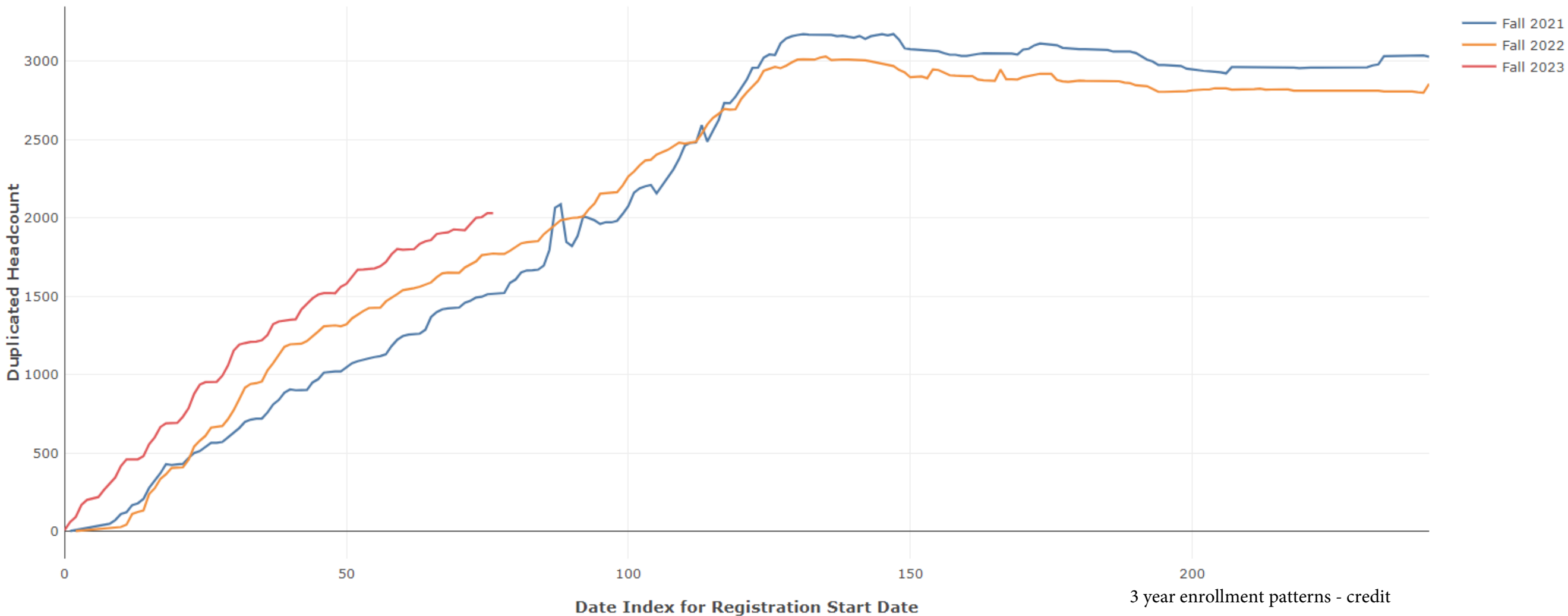
Semester is Fall

Measures

Duplicated Headcount

Series

Term



3 year enrollment patterns - credit

Report Filters

Academic Level is Non Credit

Academic Years Ago is in list (-1, 0, 1)

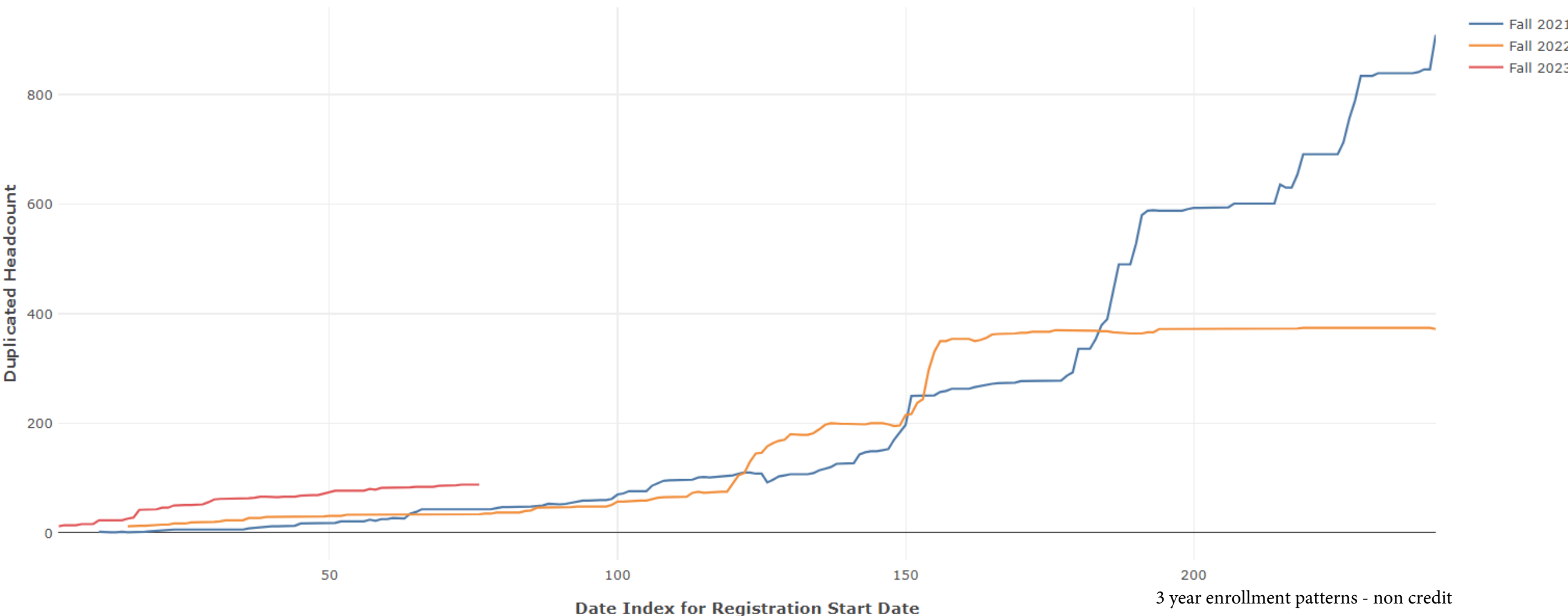
Date Index for Registration Start Date : All

Enrolled is Yes

Semester is Fall

Measures

Duplicated Headcount



Series

Term

3 year enrollment patterns - non credit