



Education and Human Development

Far North
Subregional Sector Profile



2023



FIVE-YEAR OUTLOOK

5%
sector job growth
over next five years

3,100+
annual job openings
over next five years

17%
of Far North's
jobs

This project is supported by Strong Workforce Program (SWP) funding.



Introduction

This sector profile highlights in-demand, middle-skill jobs that pay above a living wage.

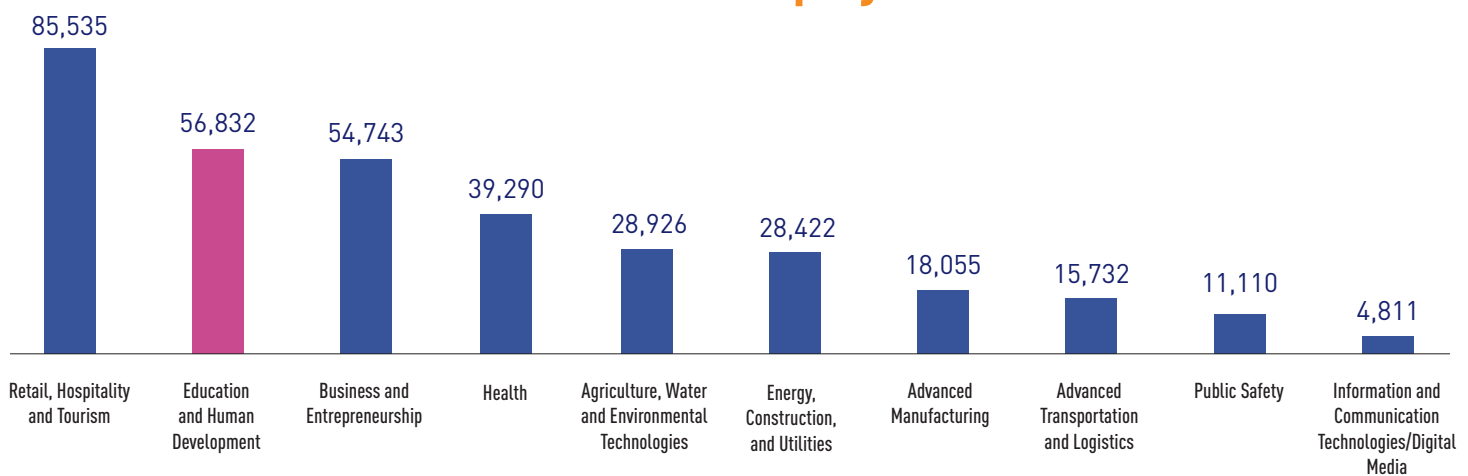
Middle-skill jobs, those which require education or training beyond a high school diploma but less than a bachelor's degree, are a critical component of the overall workforce and support the economic vitality of the region and the state.

This sector profile summarizes key data about current and projected workforce demand, hourly wages, job postings, and community college programs to support the goals of California's Strong Workforce Program (SWP).

SWP is an initiative designed to expand career education (CE) programs offered by the California Community Colleges to supply a skilled workforce to California's employers. The North Far North Regional Consortium (NFNRC) is charged with coordinating the planning and implementation of CE programs among community colleges within the 22-county North/Far North region, which includes the North (Greater Sacramento) and Far North subregions.

The Far North subregion encompasses 15 counties (Butte, Colusa, Del Norte, Glenn, Humboldt, Lake, Lassen, Mendocino, Modoc, Plumas, Shasta, Sierra, Siskiyou, Tehama, and Trinity) and seven community colleges (Butte, College of the Redwoods, College of the Siskiyous, Feather River, Lassen, Mendocino, and Shasta).

Far North 2021 Sector Employment



SECTOR Highlights



56,832
Jobs in 2021

59,790
Projected Jobs in 2026

5%
Projected Job Growth,
2021-2026

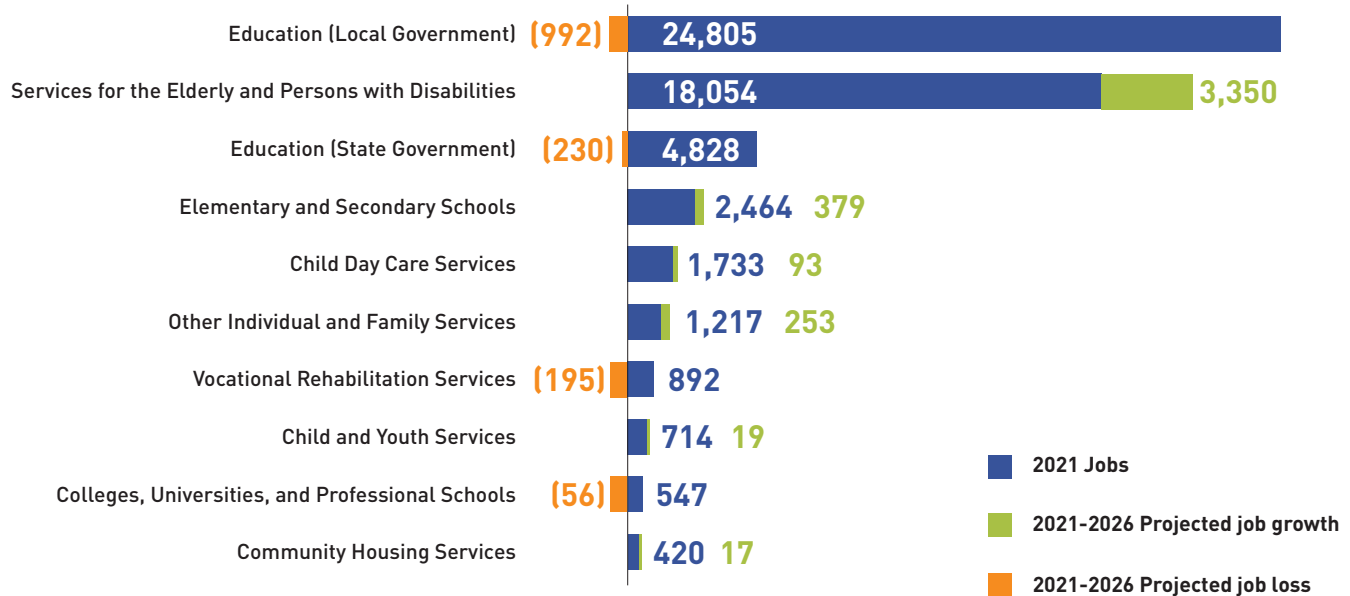
2,958
New Jobs by 2026

15,986
Businesses

16.6%
% of Far North
Employment, 2021

Note: The Education and Human Development sector includes 26 distinct 6-digit NAICS codes. Contact the NFN COE for a complete listing of NAICS codes by sector.

Employment by Industry Subsector

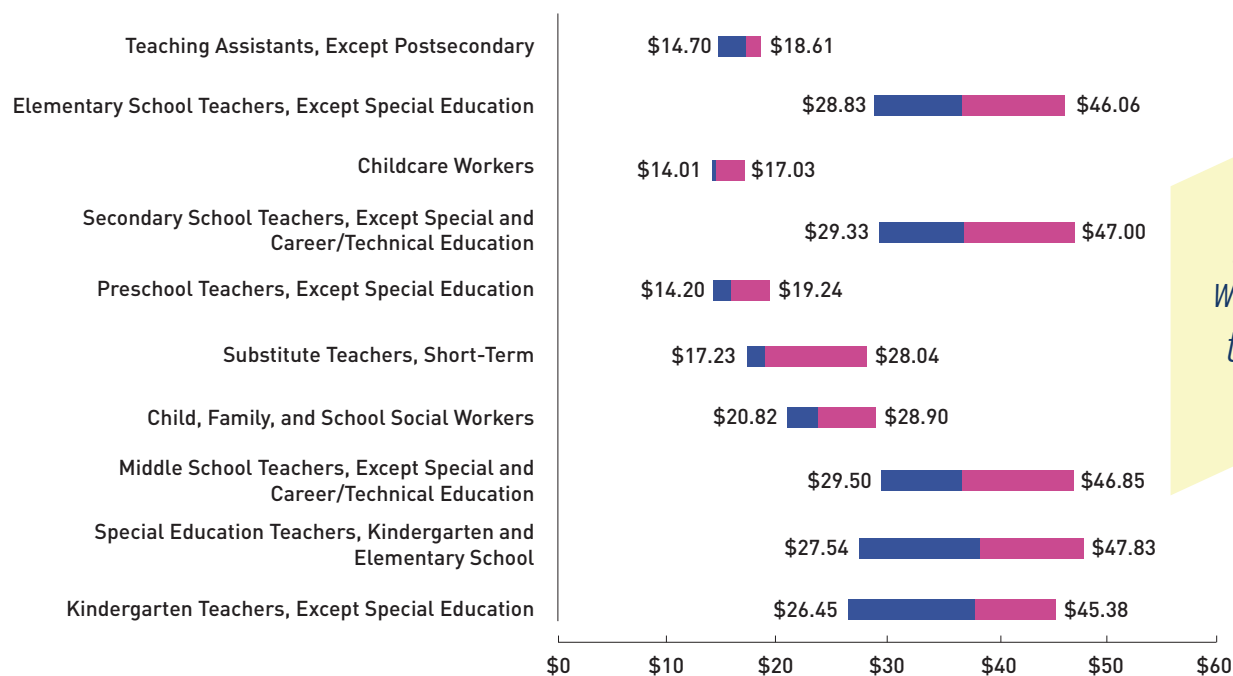


Priority Middle-Skill Occupations

Occupation	2021 Jobs	2021-2026 Projected % Change	2021-2026 Average Annual Openings	Typical Entry-Level Education
Teaching Assistants, Except Postsecondary	3,747	(1%)	357	Some college, no degree
Childcare Workers	1,946	(4%)	281	High school diploma or equivalent
Preschool Teachers, Except Special Education	1,359	6%	159	Associate degree
Elementary School Teachers, Except Special Education	4,469	(2%)	335	Bachelor's degree
Secondary School Teachers, Except Special and Career/Technical Education	2,393	1%	179	Bachelor's degree
Substitute Teachers, Short-Term	1,352	0%	159	Bachelor's degree
Child, Family, and School Social Workers	972	7%	105	Bachelor's degree
Middle School Teachers, Except Special and Career/Technical Education	1,186	1%	93	Bachelor's degree
Special Education Teachers, Kindergarten and Elementary School	407	0%	31	Bachelor's degree
Kindergarten Teachers, Except Special Education	275	0%	29	Bachelor's degree

Note: Jobs for the above occupations may not solely exist in this sector and may be found in other sectors that require related services. Projected change includes new job growth and replacements.

Middle-Skill Hourly Wage Ranges



These occupations pay a starting wage at or above the subregion's living wage.

Note: The hourly wage ranges include the 25th percentile (entry-level), median, and 75th percentile (experienced) hourly earnings for workers employed in these occupations across the Far North subregion where the minimum wage in 2021 was \$15.

Priority Middle-Skill Job Postings



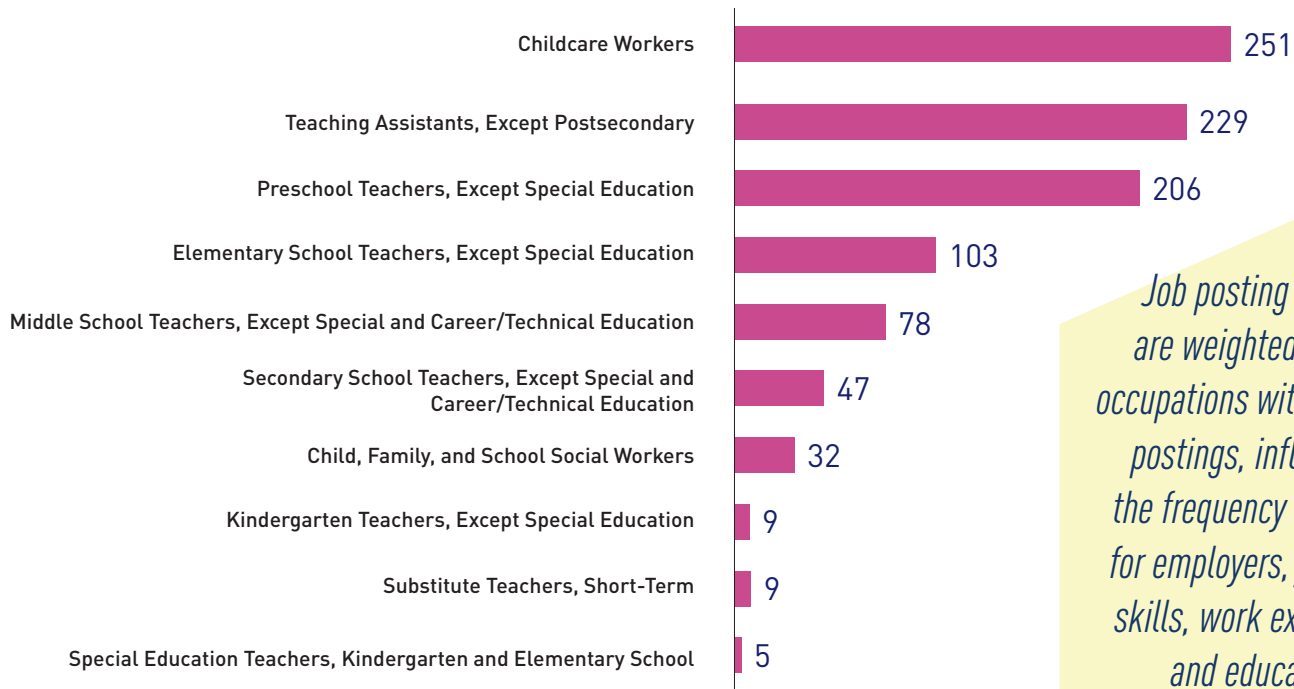
Posting intensity is the ratio of duplicated to unique job postings. A higher-than-average posting intensity can mean employers are putting more effort into hiring.

969
Online Job Postings

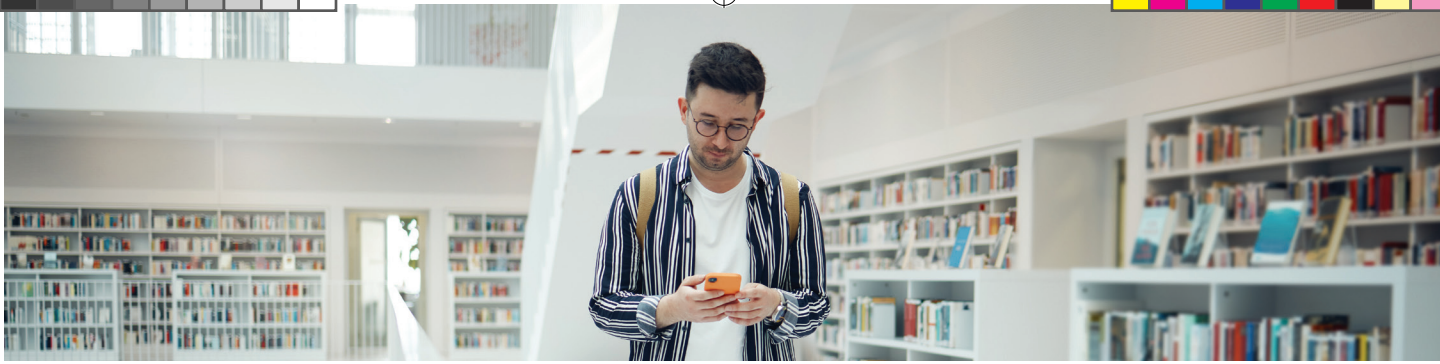
2:1
Posting Intensity
(Regional Average 3:1)

Note: Job postings count the number of online job postings advertised in the 15-county Far North subregion between January 1, 2022 - March 31, 2023. Postings are limited to in-state employers and exclude staffing companies. Job posting results represent the top 10 priority middle-skill occupations.

Job Postings by Occupation



Job posting results are weighted toward occupations with the most postings, influencing the frequency of results for employers, job titles, skills, work experience, and education.



Top Employers & Job Titles

Employers with the Most Postings

E-Center
 Shasta College
 Konocti Unified School District
 Mendocino College
 Gateway Unified School District

Job Titles with the Most Postings

Nannies/Babysitters
 Preschool Teachers
 Associate Teachers
 Classroom Aides
 Head Teachers

Most In-Demand Skills

Specialized Skills

- Child Development
- Early Childhood Education
- Preschool Education
- Individualized Education Programs (IEP)
- Head Start (Education Program)

Soft Skills

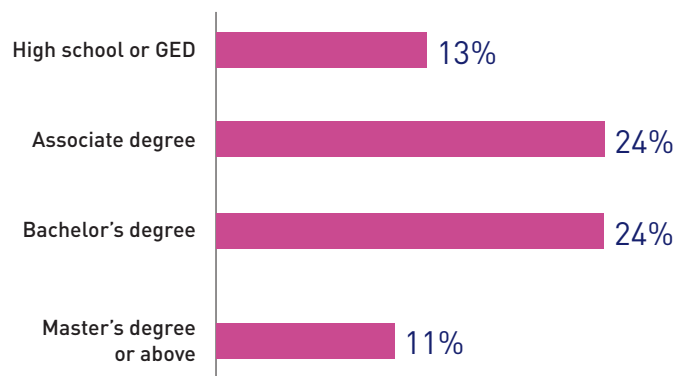
- Teaching
- Communications
- Management
- Planning
- Mathematics

Software and Technical Skills

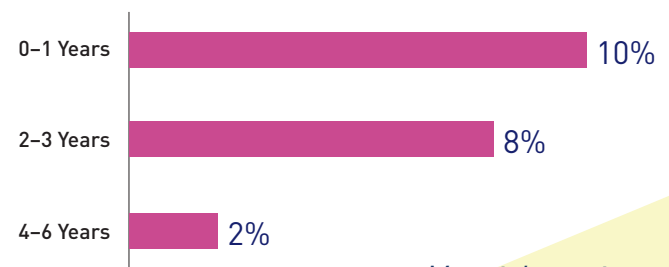
- Microsoft Office (Access, Excel, Outlook, PowerPoint, Word)
- Zoom
- Student Information Systems
- Database Software/Systems
- Learning Management Systems

Education & Experience in Postings

Employer-Preferred Education



Employer-Preferred Work Experience



Most job postings do not include a preferred education or experience level.

Community College Programs



Butte College	College of the Redwoods	College of the Siskiyous	Feather River College	Lassen College	Mendocino College	Shasta College
Early Childhood Education	Early Childhood Education	Early Childhood Education	Early Childhood Education	Early Childhood Education	Early Childhood Education	Early Childhood Education
Child Development			Teacher	Child Development	Child Development	Human Services
					Family Relations	





Prepared by

Ebony J. Benzing, Research Manager
North/Far North Center of Excellence for Labor
Market Research

Supported by:
Juan Madrigal, Labor Market Research Consultant

Editing by:
Lauren McSherry, L.M. McSherry Consulting

Graphic Design by:
Jim Schneider, Right Angle Design

Sources

- Lightcast 2022.4 - QCEW Employees, Non-QCEW Employees, and Self-Employed
- Centers of Excellence for Labor Market Research Occupation Crosswalk
- California Community Colleges Chancellor's Office LaunchBoard
- California Community Colleges Chancellor's Office DataMart
- Integrated Postsecondary Education Data System (IPEDS)
- California Community Colleges Curriculum Inventory (COCI)

Disclaimers:

All representations included in this report have been produced from primary research and/or secondary review of publicly and/or privately available data and/or research reports. Efforts have been made to qualify and validate the accuracy of the data and the reported findings; however, neither the Centers of Excellence, COE host District, nor California Community Colleges Chancellor's Office are responsible for applications or decisions made by recipient community colleges or their representatives based upon components or recommendations contained in this study.

© 2023 California Community Colleges Chancellor's Office, Centers of Excellence for Labor Market Research, Economic and Workforce Development Program

